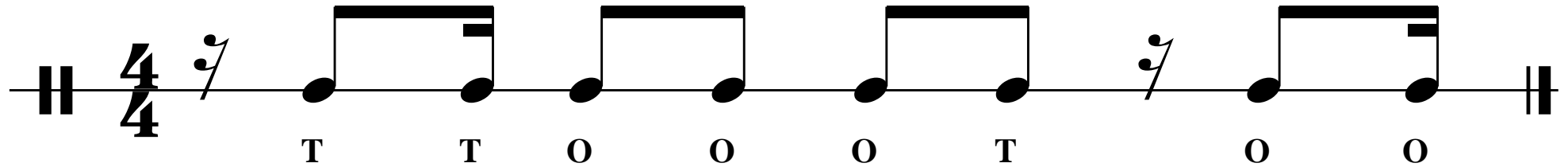
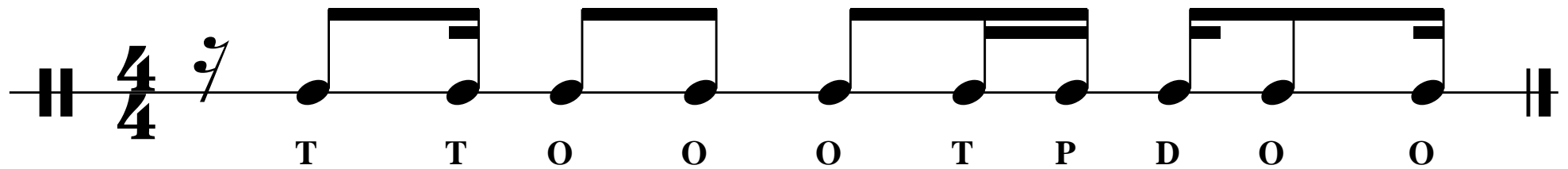


# Partido Alto

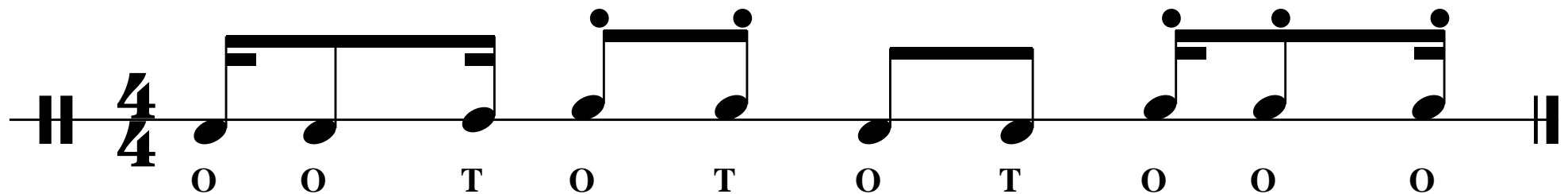
partido alto 1



partido alto 2



partido alto 3



"Batuque bom"

4/4

O D P D Ø O D P D Ø O D P D Ø D P D O D P D Ø

Samba exaltação

2/4

Ø D P T O D P OO

Samba 1

Musical notation for Samba 1 in 2/4 time. The first measure contains the chords Ø, D, P, and D. The second measure contains the chords O, D, P, and D. Both measures are marked with an accent (>) above the first chord.

Samba 2

Musical notation for Samba 2 in 2/4 time. The first measure contains the chords O, D, P, and D. The second measure contains the chords Ø, D, P, and D. Both measures are marked with an accent (>) above the first chord.

Samba "Surdo de terceira"

$\text{O}$   $\text{D}$   $\text{O}$   $\text{D}$   $\emptyset$   $\text{D}$   $\text{P}$   $\text{D}$   $\text{O}$   $\text{OO}$   $\text{P}$   $\text{OO}$   $\emptyset$   $\text{D}$   $\text{P}$   $\text{D}$

$\text{O}$   $\text{D}$   $\text{O}$   $\text{D}$   $\emptyset$   $\text{D}$   $\text{O}$   $\text{D}$   $\text{P}$   $\text{OO}$   $\text{P}$   $\text{OO}$   $\emptyset$   $\text{D}$   $\text{P}$   $\text{D}$

Samba Enredo

Musical notation for Samba Enredo in 2/4 time. The notation consists of two measures. Each measure begins with a half note on the first line (C4), marked with an accent (>) and a fermata. This is followed by four quarter notes: D4, F4, A4, and G4. The notes D, F, and A are marked with accents (>). The first measure ends with a fermata over the G4 note. The second measure repeats the same sequence of notes and accents, also ending with a fermata over the G4 note. The piece concludes with a double bar line.

Samba de caixa

Musical notation for Samba de caixa in 4/4 time. The notation consists of four measures. Each measure begins with a half note on the first line (C4), marked with an accent (>) and a fermata. This is followed by four quarter notes: D4, F4, A4, and G4. The notes D, F, and A are marked with accents (>). The first measure ends with a fermata over the G4 note. The second measure repeats the same sequence of notes and accents, also ending with a fermata over the G4 note. The third measure repeats the same sequence of notes and accents, also ending with a fermata over the G4 note. The fourth measure repeats the same sequence of notes and accents, also ending with a fermata over the G4 note. The piece concludes with a double bar line.

6

Samba de roda

4/4

D Ø D Ø OO P T O OO P D Ø D O D O

Maculelê

4/4

OO P D O D P T P OO P T P T P D O

Ilú

O D P ØØ P ØØ P OO O D P OO O D P OO

Meio Coco

7

2/4

>

OO P D O D P T P

Embolada

2/4

>

OO P D O D P D P

Ragga

2/4

>

OO P D O D P OO P

# Capoeira

## Capoeira (naipe 1)

2/4

O D P T O T

## Capoeira (naipe 2)

O T O O T O O T O T T O T O

# 6/8 Ritmos

"Base de jongo" (naipe 1)

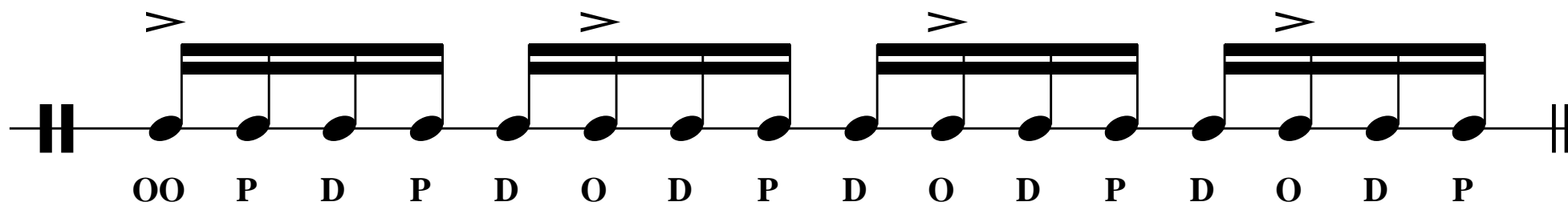
(naipe 2)

T P T P T P OO O D O D P      D D D O O O

"Negô de engenho"

O D P T P D O D P T P D      O D P T P D O D O D O D

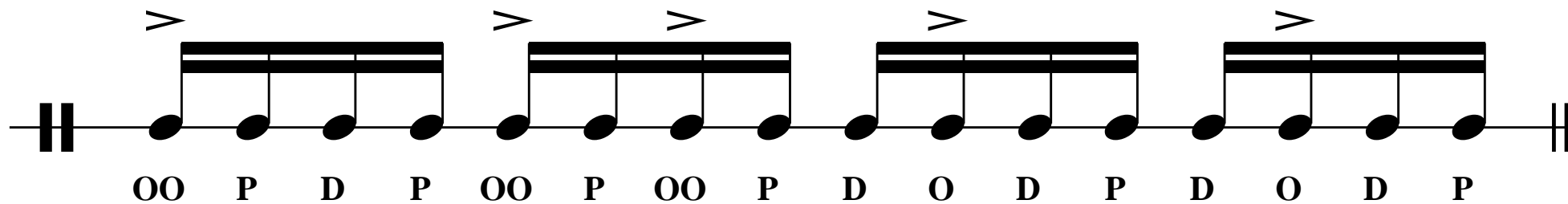
## Maracatu 1



Musical notation for Maracatu 1, consisting of four measures. Each measure is marked with an accent (>) above the first note. The notes are represented by black dots on a horizontal line. The first measure has four notes, the second has four notes, the third has four notes, and the fourth has four notes. The notes are grouped by a thick black bar above them. The notes are labeled with letters below them: OO P D P, D O D P, D O D P, D O D P.

OO P D P D O D P D O D P D O D P

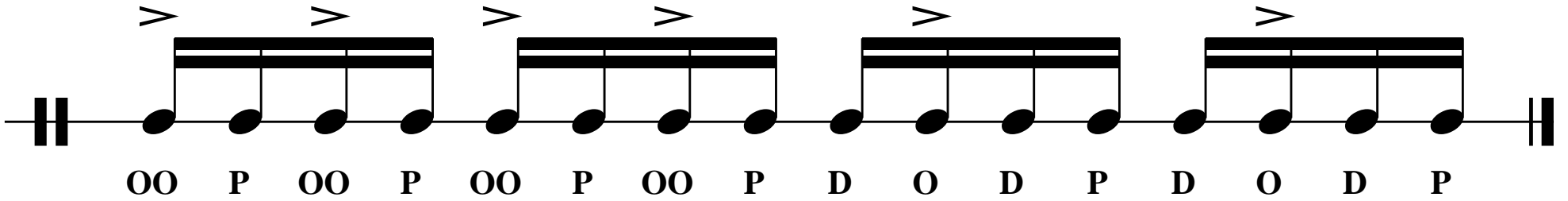
## Maracatu 2



Musical notation for Maracatu 2, consisting of four measures. Each measure is marked with an accent (>) above the first note. The notes are represented by black dots on a horizontal line. The first measure has four notes, the second has four notes, the third has four notes, and the fourth has four notes. The notes are grouped by a thick black bar above them. The notes are labeled with letters below them: OO P D P, OO P OO P, D O D P, D O D P.

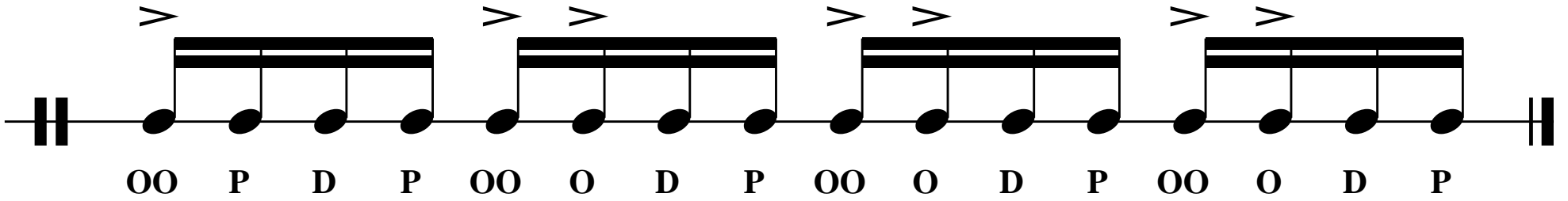
OO P D P OO P OO P D O D P D O D P

Maracatu 3



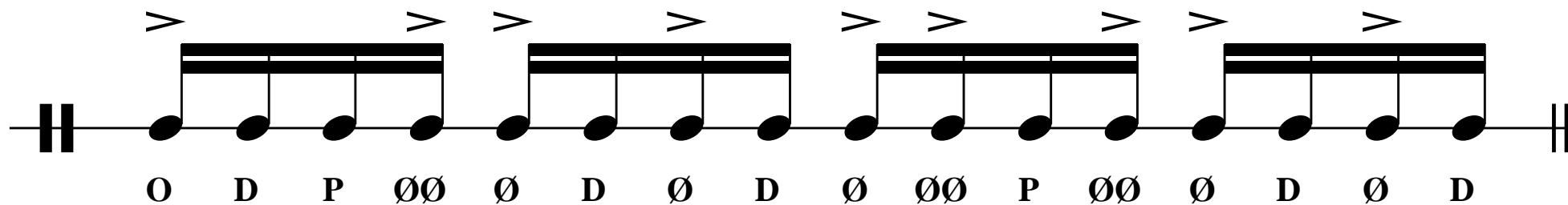
Musical notation for Maracatu 3. It consists of a single staff with a double bar line at the beginning and end. The staff contains four groups of four notes, each group starting with a note marked with an accent (>). The notes are connected by a thick horizontal line. Below the staff, the notes are labeled with letters: O O P O O P O O P D O D P D O D P.

Maracatu 4



Musical notation for Maracatu 4. It consists of a single staff with a double bar line at the beginning and end. The staff contains four groups of four notes, each group starting with a note marked with an accent (>). The notes are connected by a thick horizontal line. Below the staff, the notes are labeled with letters: O O P D P O O O D P O O O D P O O O D P.

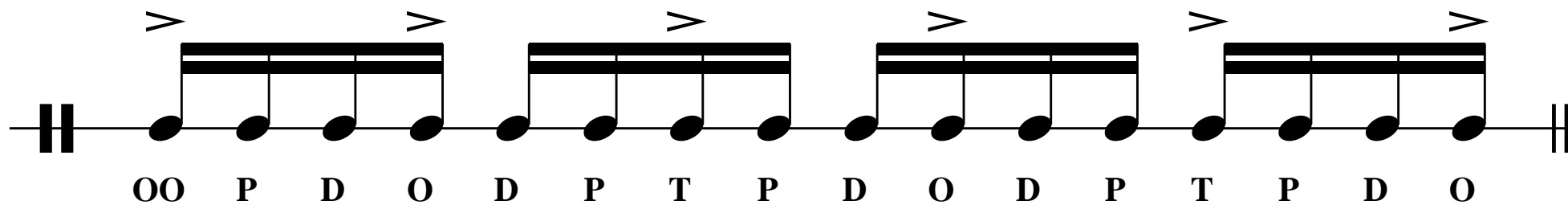
Ciranda



Musical notation for Ciranda, consisting of four groups of four notes each, separated by bar lines. Each note has an accent (>) above it. The notes are represented by black dots on a horizontal line. Below each note is a letter: O, D, P, ØØ, Ø, D, Ø, D, Ø, ØØ, P, ØØ, Ø, D, Ø, D.

O D P ØØ Ø D Ø D Ø ØØ P ØØ Ø D Ø D

Congo



Musical notation for Congo, consisting of four groups of four notes each, separated by bar lines. Each note has an accent (>) above it. The notes are represented by black dots on a horizontal line. Below each note is a letter: ØØ, P, D, O, D, P, T, P, D, O, D, P, T, P, D, O.

ØØ P D O D P T P D O D P T P D O

# Tributo á Bahia

## Levada

Musical notation for the 'Levada' section, featuring a 7/8 time signature. The notation consists of two measures of music, each containing seven eighth notes. The notes are grouped into pairs of beamed eighth notes. The first measure has notes on the first, second, and third lines, while the second measure has notes on the first, second, and third spaces. The notes are marked with stems and beams.

T T T O O O T T T O O O T T O O

## Naípe 1: inspirado em uma levada de agogô

Musical notation for 'Naípe 1', showing a sequence of notes with stems and beams. The notation consists of two measures of music, each containing five notes. The notes are grouped into pairs of beamed eighth notes. The first measure has notes on the first, second, and third lines, while the second measure has notes on the first, second, and third spaces. The notes are marked with stems and beams.

T T O O T T O O O

## Naípe 2a

Musical notation for 'Naípe 2a', showing a sequence of notes with stems and beams in 2/4 time. The notation consists of three notes: a quarter note on the first line, a quarter note on the second line, and a half note on the second space. The notes are marked with stems and beams.

T T O

## Naípe 2b

Musical notation for 'Naípe 2b', showing a sequence of notes with stems and beams in 2/4 time. The notation consists of two measures of music, each containing four notes. The notes are grouped into pairs of beamed eighth notes. The first measure has notes on the first, second, and third lines, while the second measure has notes on the first, second, and third spaces. The notes are marked with stems and beams, and the first note of each measure has an accent (>).

T P D P T P OO P

Naipe 3

14

OO P D O D P OO P T P D P D P D P

D O D O D P OO P T P D P D P D P

Samba-Choro

Ø D P D O D D P OO

quem sabe o nome desse ritmo?!?

15

2/4

OO P D Ø OO P ØØ P

Samba Funk

4/4

OO P D O T P OO P D P OO P T O D P

Salsa/Rumba

2/4

OO P D O R P OO O R P T O R P OO O